

Instruction Sheet

Follow these instructions to replace
a Touch Screen Controller.

318-865-1711

800-551-8633

WWW.FRYMASTER.COM

EMAIL: FRYSERVICE@FRYMASTER.COM

Subject: 8263619 UHCTHD Touch Screen Replacement Kit Instructions

Models affected: UHCTHD Holding Cabinets

In This Kit		
Part #	Description	Qty
8076760	CONTROL, UX CUI	1
8122590	SD CARD, UHC-T PRIMARY (FRONT) prior to 05/2026	1
8122623	SD CARD, UHC-T SECONDARY (REAR) prior to 05/2026	1
130426594	SD CARD, UX A7 UHC-T PRIMARY (FRONT) after 04/2026	1
130426604	SD CARD, UX A7 UHC-T SECONDARY (REAR) after 04/2026	1
8076328	CABLE, COMM CROSSOVER NO DC	2
8076441	CABLE, UHC-T UI TO UI	1
8076425	HARNESS, DC UHC-T	1
8198096	INSTRUCTIONS	1
8197667	UHCTHD IO MANUAL	1
130296322	HARNESS, UX UI CABLE ADAPTER	1
8076535	COUPLER-COMMON TOUCHSCREEN	1
130401843	SCREW, M3 X 10 THREAD FORMING	8

1. Disconnect power from the unit.
2. Remove the top cover of the cabinet by removing the four (4) Phillips head screws that attach the cover (see Figure 1).
3. Disconnect all cables from the failed touch screen controller (see Figure 2).
4. Replace the four (4) (CAN, IO and Power) cables with the included (4) **NEW** (CAN, IO and Power) cables.
5. Using a Phillips screwdriver (or 7mm nut driver for some units), remove the eight (8) screws/bolts attaching the retaining frame to the rear of the controller (see Figure 3).
6. Push in on the two (2) black tabs to release the controller from the retaining frame bracket (see Figure 4). The controller is removed from the outside of the cabinet (see Figure 5).
7. Note the type and location of the controller removed. If the rear of the controller removed matches the rear of the controller in Figure 3, it is the old style of controller prior to 05/2026. If the rear of the controller matches the rear of the controller in Figure 6, it is the new style of controller after 04/2026.
8. Is the controller being replaced the Front (Primary) controller next to the power switch, or the Rear (Secondary) controller?



Figure 1

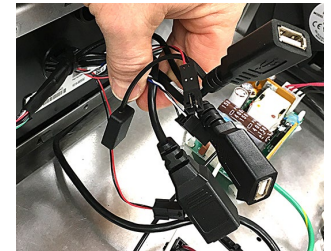


Figure 2

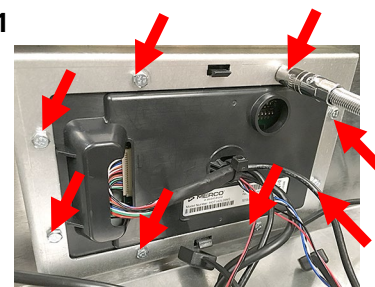


Figure 3



Figure 4



Figure 5



Figure 6

9. **NOTE: The supplied SD cards are controller specific. The individual Micro SD cards ARE NOT labeled; however, the BAGS ARE LABELED with the specific controller part numbers. Remove only ONE (1) SD card from the bag at a time to avoid confusion.** Use the table below to determine which SD card enclosed in the kit should be installed in the new controller and the existing controller if applicable. In double sided units, two SD cards from the kit will be used.

Front (Primary) Controller (Next to Power Switch)	SD Card PN required	Rear (Secondary) Controller	SD Card PN required
Matches Figure 3	8122590	Matches Figure 3	8122623
Matches Figure 6	130426594	Matches Figure 3	8122623
Matches Figure 3	8122590	Matches Figure 6	130426604
Matches Figure 6	130426594	Matches Figure 6	130426604

10. Place the new replacement controller on a flat surface in another area of the restaurant to insert the new Micro SD card.

11. Gently lift the rubber cover on the rear of the controller and rotate gently to one side to access the SD card slot reader (see Figures 7 & 8).

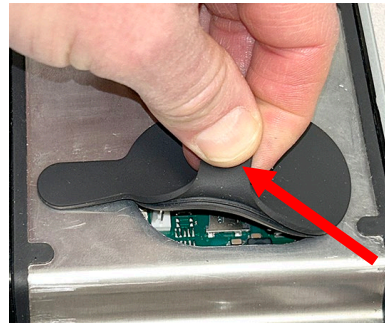


Figure 7

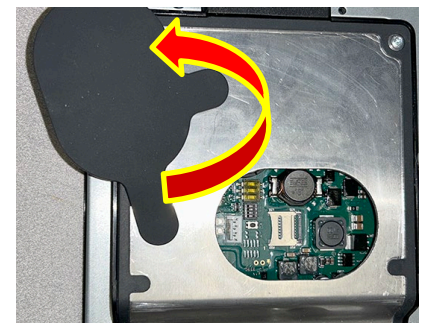


Figure 8

12. Gently slide the lock towards the **RIGHT as shown** arrow towards the gray plastic edge until the top retainer stops (see Figure 9).

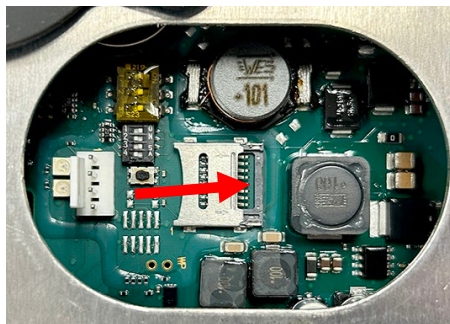


Figure 9

13. Gently lift the lock and flip all the way open (see Figures 10 & 11).

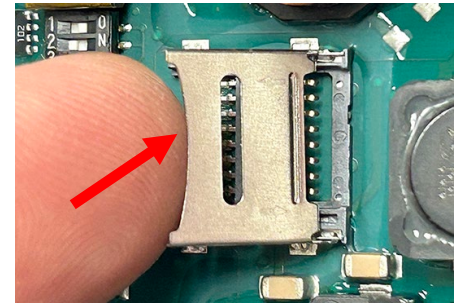


Figure 10

14. Carefully insert the Micro SD card into the slot, with the contacts facing down as shown. The tab should fit into the notch on the side of the Micro SD card (see Figure 12).

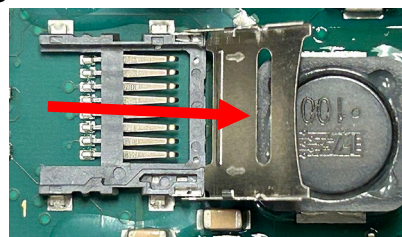


Figure 11

15. Gently lower the lock and slide towards the **LEFT as shown** until it stops (see Figure 13). The Micro SD card should be flush with the front of the SD card holder.

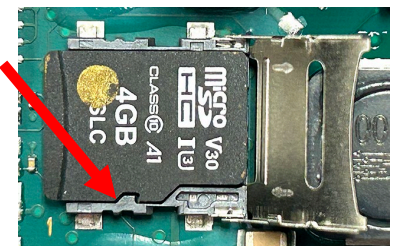


Figure 12

16. Rotate the rubber cover back over the opening and secure it to the metal work (see Figure 14).

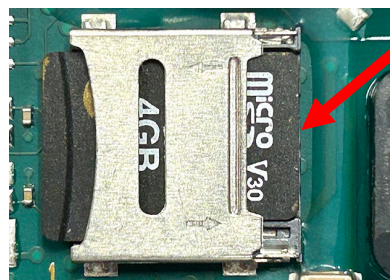


Figure 13



Figure 14

17. Insert the controller wire harnesses through the cabinet opening through the metal retaining bracket as shown (see Figure 15) as seen from inside the cabinet.

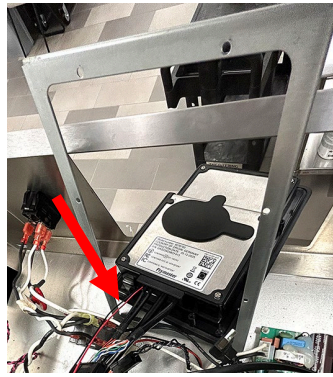


Figure 15

18. Rotate the bracket and controller so that they sandwich the cabinet frame between them as shown, with the wire harnesses positioned as shown (see Figure 16).

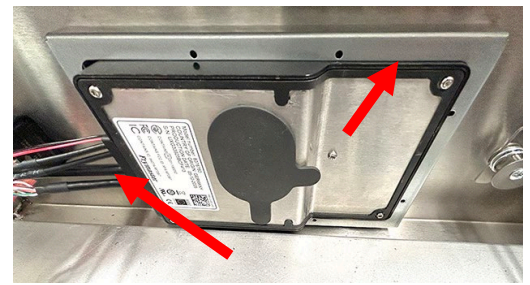


Figure 16

19. Using the eight (8) supplied screws, attach the metal frame to the controller with a #10 torx driver (see Figure 17). Torque carefully to 11-13 lbs to avoid breaking plastic of the controller. **DO NOT OVERTIGHTEN the screws.**

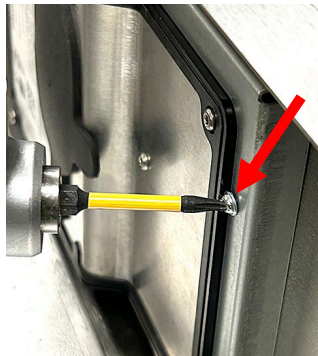


Figure 17

20. Attach 130296322 20-pin harness with the two (2) USB and ethernet connector (Figure 18) to the 20-pin connector of the controller (see Figure 19).



Figure 18

21. Connect the 2-wire red and black speaker wire (see Figure 20).

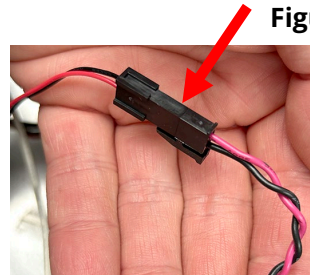


Figure 20

22. Connect the two (2) USB extensions to the harness connected in step 20 (see Figure 21).

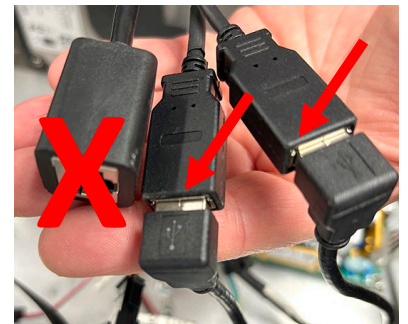


Figure 21

23. **DO NOT CONNECT ANY CABLE TO THE ETHERNET CONNECTION IN FIGURE 21 or 22! (see Figure 22). Plugging an IO board harness into this port can permanently damage the controller.**



Figure 22

24. Connect the 8076535-coupler harness (see Figure 23) 12-pin connector to 12-pin connector on the controller (see Figure 24).



Figure 23

25. Connect the 8076535-coupler 6-pin CANBUS connector to the 6-pin CANBUS harness from the other controller (see Figure 25).

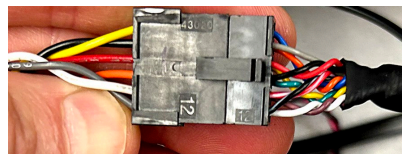


Figure 24

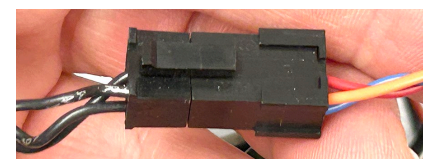


Figure 25

26. Connect the 8076535-coupler two (2) wire 4-pin power cable connector (gray & white) to the two (2) wire (black & red) 4-pin power harness (see Figure 26).

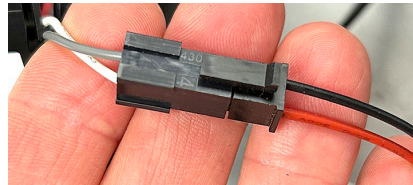


Figure 26

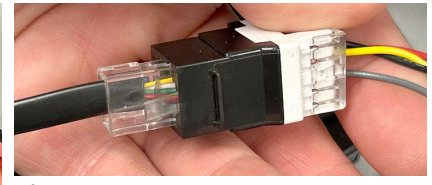


Figure 27

27. Connect the 8076535-coupler RJ (ethernet) connector to the RJ (ethernet) cable from the IO board (see Figure 27).

28. If the other controller is the same type as the controller replaced, repeat steps 3 through 27 to replace the SD card on the other controller then skip to step 32, otherwise continue to next step.

29. If an older style controller is in the other location, follow steps starting with the next step to replace the SD card on the older style controller. Use the table on page 2 to determine which SD card to use.

30. If necessary, use tweezers to remove the SD card (see Figure 28) from the old controller.

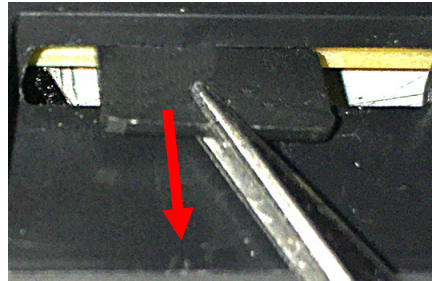
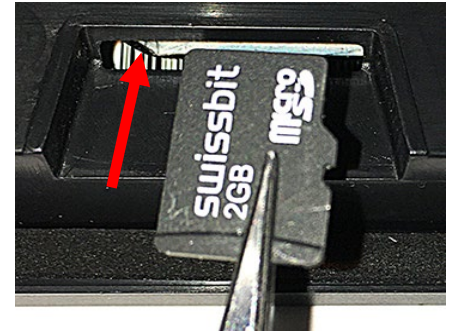


Figure 28

31. Insert the new SD card with contacts down towards the board (see Figure 29) into the new controller. Gently push the SD card into the SD card slot until it locks in place (see Figure 30).



32. Reconnect power and turn on the power switch.

33. If the new controller powers up and fully boots, go to step 34.

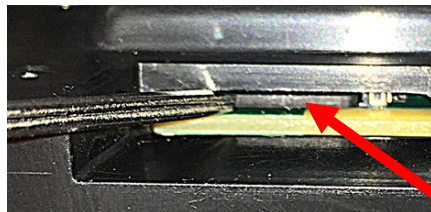





Figure 30

Firmware Versions	
Board	Version
UI (Primary)	A7-3001 or UX2065
I/O board	0.5.0

Figure 31

34. If the new controller **DOES NOT** boot up, check to ensure the SD card is correctly inserted.

34. Once the cabinet is powered up and fully booted up, check the software versions on **BOTH** controllers by pressing the  button. Press the  button. Swipe two times to the right to **System Information**. Verify the UI software versions **MATCHES one of the versions above on BOTH controllers**. The latest controller software version for the older style controller is **UX-2605**. The latest controller software version for the newer style controller is **A7-3001**. The IO software version should be **0.5.0** (see Figure 31). Ensure **Primary** is displayed on the **FRONT** controller and **Secondary** on the **REAR** controller. **To update to the latest version, both controllers will need the supplied SD cards installed to update BOTH controllers.**

35. Press the  button.

Press



36. Press the  button.

37. Check all connections to ensure that the connections are secure.

38. Reattach the top and return the cabinet to service.

39. It may be necessary to enter the serial # and model # from the rating plate (see Figure 32).

Figure 32

40. It may be necessary to reassign locations of products, add new products, load menus, change settings, etc. before leaving the location. Check with store manager for any special products. See enclosed manual for details.
41. If the configuration needs to be reset follow these steps:
42. Press the  button. Press the  button. Swipe to the left to **Utilities**.
43. Press and hold the easyTouch logo in the lower right corner for 10 seconds. The controller displays Reset Configuration. Press the GREEN checkmark button. (see Figure 33).

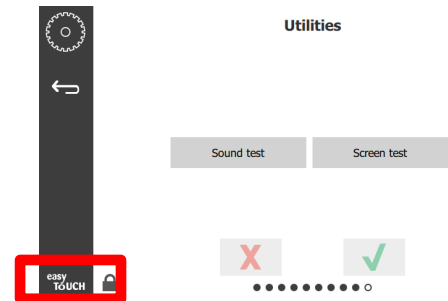


Figure 33

44. Power cycle the cabinet.
45. After the cabinet boots up, the controller displays the orientation screen (see Figure 34). Select the arrow which matches the orientation of the screen.



Figure 34

46. The controller displays the model # configuration screen (see Figure 35).
47. Press the down arrow (see Figure 35)

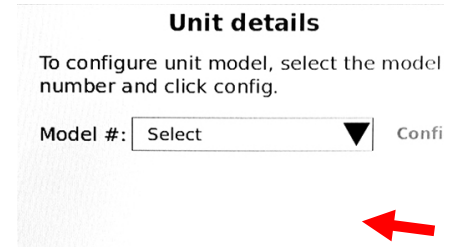


Figure 35

48. Select the correct configuration for the cabinet configuration (see Figure 36). Choose UHCTHD3SP for 3-row Single Sided; Choose UHCTHD3TP for 3-row Double Sided; Choose UHCTHD6SP for 6-row Single Sided; Choose UHCTHD6TP for 6-row Double Sided.

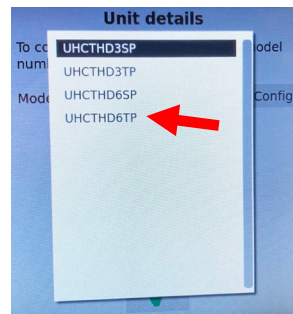


Figure 36

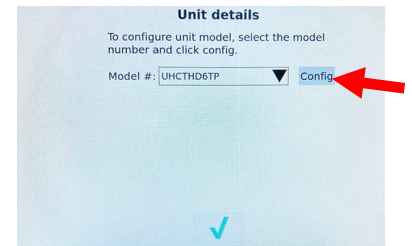


Figure 37

49. Once the model is selected, press the **Config** button (see Figure 37).
50. Choose Front or Back for the location of the controller.

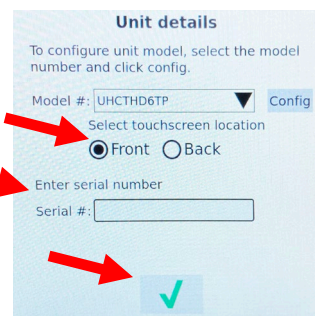


Figure 38

51. Press the Serial # field and use the keyboard to enter the serial number of the cabinet. When finished press the return key and the GREEN checkmark (see Figure 38).

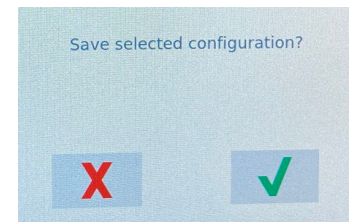


Figure 39

52. The controller displays "Save selected configuration?" Press the green checkmark button to continue (see Figure 39). If another display on the cabinet needs to be configured, repeat steps 41-52 on that display.

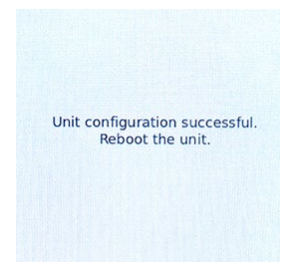


Figure 40

53. The controller displays "Unit configuration successful. Reboot the unit." (see Figure 40). Power cycle the cabinet by switching OFF the power switch for five (5) seconds and switching back on.